

# Shodex Affinity Columns

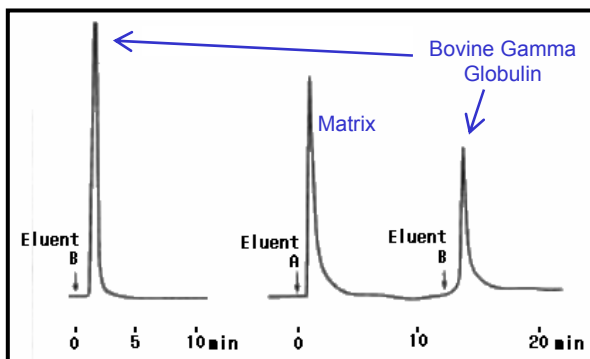
## AFpak Series



- Fast and highly reproducible analyses - Rigid and stable gel
- Long life - Hundreds of analyses
- Minimal ligand detachment - Chemically stable bonding spacers

Product name	Ligand	Applications
<u>AFpak AAB-894</u>	Aminobenzamidine	Serine protease
<u>AFpak AAF-894</u>	Acriflavine	RNA, DNA, Vitamins
<u>AFpak AAM-894</u>	5'AMP	NAD, ATP dependent enzymes
<u>AFpak AAP-894</u>	Aprotinin	Serine proteases
<u>AFpak AAV-894</u>	Avidin	Biotin derivatives
<u>AFpak ABA-894</u>	Bovine serum albumin (BSA)	Chiral Separation(amino acid derivatives)
<u>AFpak ABT-894</u>	Biotin	Avidin
<u>AFpak ACA-894</u>	Concanavalin A (ConA)	Glycoprotein, polysaccharides
<u>AFpak ACB-894</u>	Cibacron Blue	Albumin, NDA dependent enzymes
<u>AFpak ADS-894</u>	Dextran sulfate	Lipoproteins, blood coagulation factors
<u>AFpak AED-894</u>	Ethylenediamine diacetic acid	Nucleic acids, serum proteins
<u>AFpak AGA-894</u>	N-acetyl-glucosamine	Lectins, carbohydrate metabolizing enzymes
<u>AFpak AGE-894</u>	Gelatin	Fibronectin
<u>AFpak AGT-894</u>	Glutathione	Enzymes related to glutathione
<u>AFpak AHR-894</u>	Heparin	Lipoproteins, blood coagulation factors
<u>AFpak AIA-894</u>	Iminodiacetic acid	Interferon, serum proteins
<u>AFpak ALC-894</u>	Lentil lectin	Glycoproteins, polysaccharides
<u>AFpak ALS-894</u>	Lysine (LCA)	Plasminogen, plasminogen activator, RNA, DNA
<u>AFpak ANA-894</u>	NAD	NAD-Dependent dehydrogen
<u>AFpak AOV-894</u>	Ovomucoid	Trypsin-like protease
<u>AFpak APA-894</u>	Protein A	Human IgG, immune complexes
<u>AFpak APB-894</u>	Aminophenyl boronic acid	Nucleic acids and catecholamines
<u>AFpak APD-894</u>	Procion red	NAD, NADP, interferon enzymes
<u>AFpak APE-894</u>	Phosphorylethanolamine	C-reactive protein, enzymes
<u>AFpak APG-894</u>	Protein G	IgG immune complex
<u>AFpak APH-894</u>	Phenylalanine	Subtilisin Carlsberg
<u>AFpak APR-894</u>	Proteamine	IgM
<u>AFpak ARC-894</u>	RCA-I	Glycoproteins, polysaccharides
<u>AFpak AST-894</u>	Soybean trypsin inhibitor	Trypsin-like proteases
<u>AFpak AWG-894</u>	Wheat germ agglutinin (WGA)	Glycoproteins, polysaccharides
<u>AFpak ACH-494</u>	Choline oxydase, Acetylcholine esterase	Choline, Acetylcholine
<u>AFpak AGO-494</u>	Glucose oxydase	Glucose

## Specific Binding of Bovine Gamma-Globulin to Protein A



**Samples** : Bovine Gamma-Globulin  
**Column** : Shodex AFpak APA-894 (8.0 I.D. x 50 mm)  
**Ligand**: Protein A  
**Eluent** : (A) 0.1 M Sodium phosphate (pH 4.5)  
 (B) 0.1 M Sodium phosphate (pH 3.0)  
**Flow rate** : 1.0 mL/min  
**Detector** : Shodex UV (280 nm)  
**Col. temp.** : Ambient

## Binding Capacities

Product name	Ligand load /gel(g)	Capacity	Product name	Ligand load /gel(g)	Capacity
<b>AAB-894</b>	100 mmol	-	<b>ALC-894</b>	6-7 mg	-
<b>AAF-894</b>	10 mmol	ATP Na 1.8 mg/column	<b>ALS-894</b>	-	Plasminogen 54 mg/g
<b>AAM-894</b>	10 mmol	Lactic dehydronase 1.5 mg/g	<b>ANA-894</b>	10 mmol	Lactic dehydronase 1.4 mg/g
<b>AAP-894</b>	5 mg	Trypsin 3 mg/g	<b>AOV-894</b>	10 mg	Trypsin 100 mg/g
<b>AAV-894</b>	5 mg	Biotin 8 mg/column	<b>APA-894</b>	4 mg	IgG Human 20 mg/g
<b>ABA-894</b>	20 mg	-	<b>APB-894</b>	800 mmol	Sorbitol 0.2 mg/column
<b>ABT-894</b>	-	Avidin 9 mg/g	<b>APD-894</b>	40-60 mmol	BSA 72 mg/g
<b>ACA-894</b>	15 mg	-	<b>APE-894</b>	-	C-reactive protein 0.91 mg/g
<b>ACB-894</b>	40 mmol	BSA 20 mg/column	<b>APG-894</b>	4-5 mg	IgG Humnan 10 mg/g
<b>ADS-894</b>	30 mg	LDL 5 mg/g	<b>APH-894</b>	50 mmol	Subtilisin Carlsberg 9 mg/g
<b>AED-894</b>	30 mmol	-	<b>APR-894</b>	4-5 mg	IgM Human 1.9 mg/column
<b>AGA-894</b>	-	Lysozyme 0.6 mg	<b>ARC-894</b>	20 mg	-
<b>AGE-894</b>	30 mg	Fibronectin 150 mg/g	<b>AST-894</b>	20 mg	Trypsin 100 mg/g
<b>AGT-894</b>	50 mmol	-	<b>AWG-894</b>	14 mg	-
<b>AHR-894</b>	5 mg	Lysozyme 4 mg/column	<b>ACH-494</b>	-	-
<b>AIA-894</b>	70 mmol	BSA 70 mg/column	<b>AGO-494</b>	-	-

## Column Specifications

Column sizes (I.D. x L mm)	8.0 x 50	2.0 x 50	1.0 x 50	0.8 x 50	0.5 x 50	0.3 x 50
		2.0 x 35	1.0 x 35	0.8 x 35	0.5 x 35	0.3 x 35
Packing Material	Polyhydroxymethacrylate					
Particle size	18 µm (exception ABA: 6 µm, APB: 10 µm)					
Pore size	200 Å (exception ABA: 100 Å)					
Temp.	5 - 40°C					
pH range	pH 2 - 10					
Max. Flow Rate	3.0 mL/min					

For price quotes and technical information, please contact Shodex or a distributor near you



**Showa Denko Europe GmbH**

Konrad-Zuse-Platz 4  
D-81829 Munich, Germany

Phone : +49 89 93 99 62 37  
 Fax : +49 89 93 99 62 7734  
 web : [www.shodex.de](http://www.shodex.de)  
 Email : [info@shodex.de](mailto:info@shodex.de)